

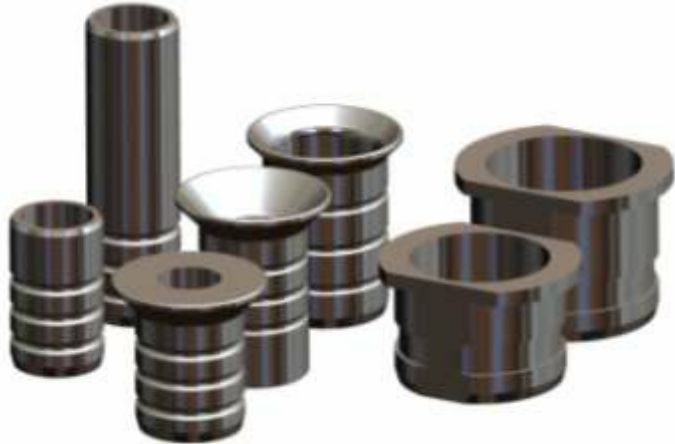


# StecoGuide drill sleeves

in coDiagnostiX™



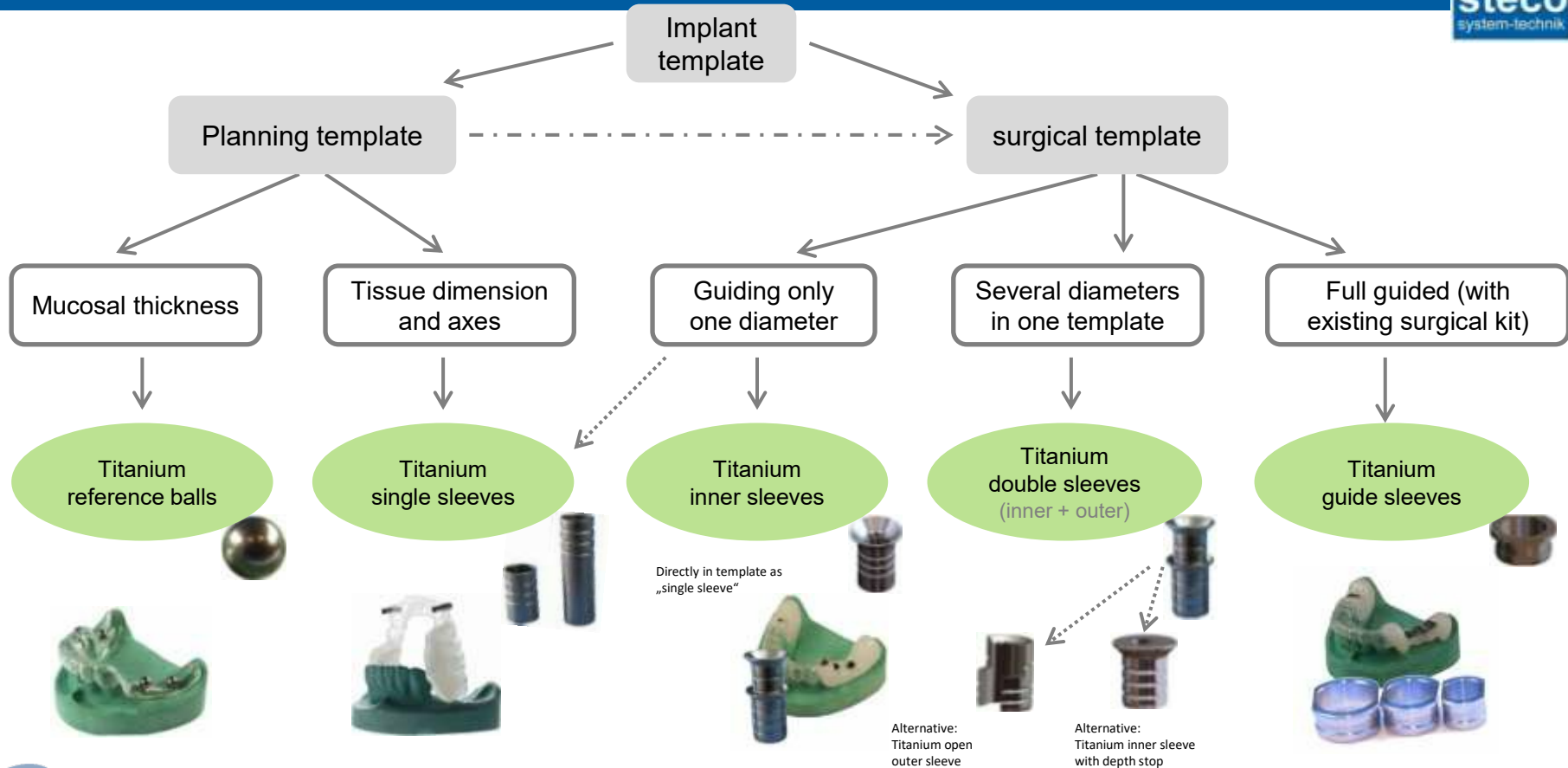
The brands are trademarks of the respective manufacturers!

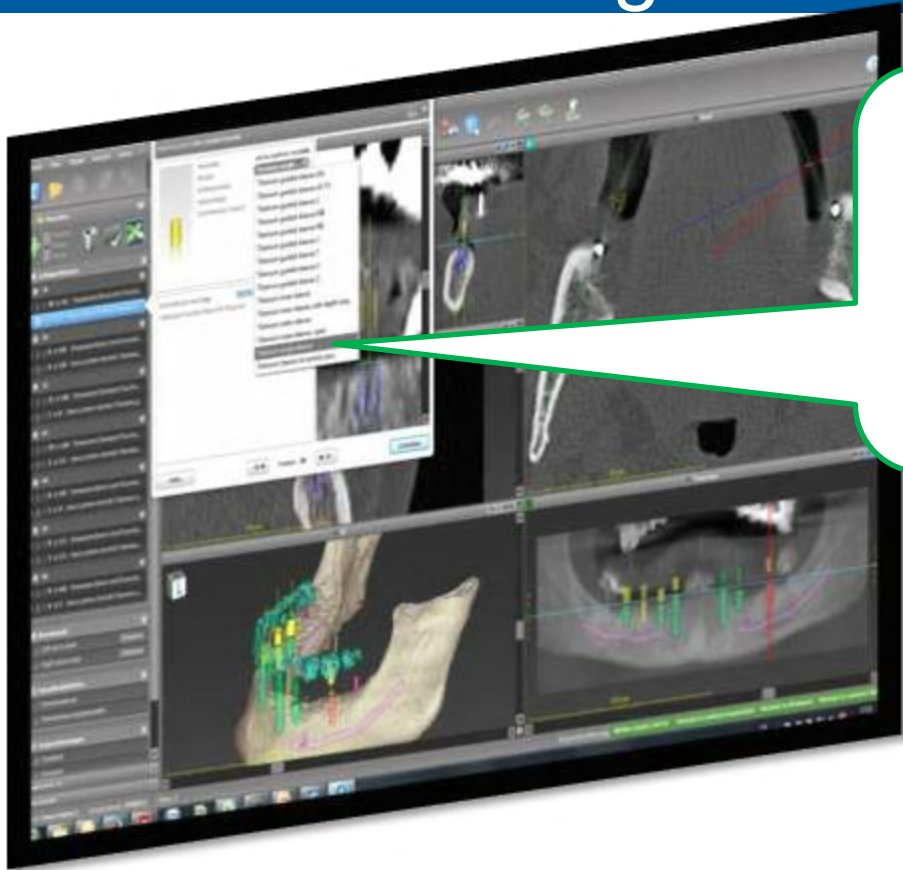


## StecoGuide Universal drill sleeves

- Titanium sleeves for implant planning
- Universal drill sleeves for surgical templates
- Alternative guide sleeves for Guided Surgery

# Which sleeve for what?





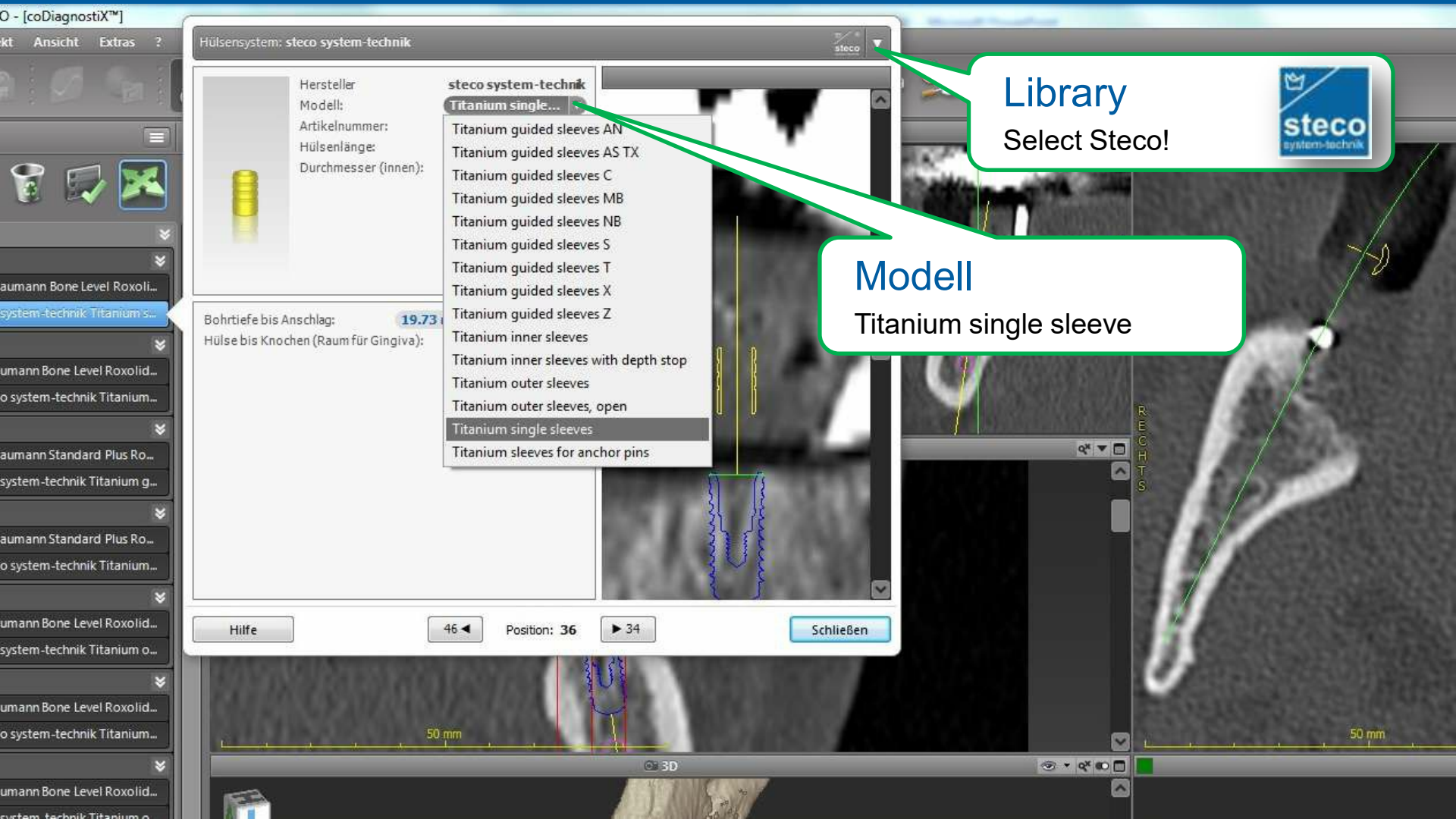
## straight single sleeves

Titanium cylinders, Planning, Diagnostics

Simple surgical guides

- Length 5 mm or 10 mm
- $\varnothing$  outer 3.0 mm
- $\varnothing$  inner 2.35 or 2.0 mm





Hülensystem: steco system-technik

steco

Hersteller:  
Modell:  
Artikelnummer:  
Hülenslänge:  
Durchmesser (innen):



steco system-technik

- Titanium single...
- Titanium guided sleeves AN
- Titanium guided sleeves AS TX
- Titanium guided sleeves C
- Titanium guided sleeves MB
- Titanium guided sleeves NB
- Titanium guided sleeves S
- Titanium guided sleeves T
- Titanium guided sleeves X
- Titanium guided sleeves Z
- Titanium inner sleeves
- Titanium inner sleeves with depth stop
- Titanium outer sleeves
- Titanium outer sleeves, open
- Titanium single sleeves
- Titanium sleeves for anchor pins

Bohrtiefe bis Anschlag: 19.73  
Hülse bis Knochen (Raum für Gingiva):

Library  
Select Steco!



Modell  
Titanium single sleeve

Hilfe

46

Position: 36

34

Schließen

50 mm

50 mm

3D



## Surgical guides with double sleeves

Variuos universal diameters

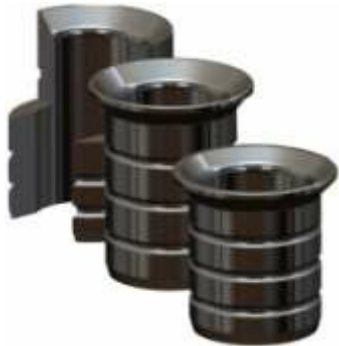
Guided in one template

- Outer sleeve fixied in template
- Inner sleeve is put in



## universal drill sleeves

- Outer sleeves closed and laterally open
- Inner sleeves with funnel or depth stop



### Outer sleeves

- 5 and 6 mm length
- outer Ø 4.0 mm
- Inner Ø 3.5 mm


### Inner sleeves

- 5 or 6 or 10 mm Länge
- outer Ø 3.5 mm
- Inner Ø 1.6, 2.0, 2.2, 2.35, 2.5, 2.8 mm
- Inner Ø 1.0, 1.16, 1.3, 2.0, 2.2, 2.35 mm



Hilfensuchen: steco system-technik

Hersteller:  
Modell:  
Artikelnummer:  
Hülslenlänge:  
Durchmesser (Innen):



Bohrtiefe bis Anschlag: 20,06  
Hülse bis Knochen (Raum für Gingiva):

steco system-technik  
Titanium outer sleeves

- Titanium guided sleeves AN
- Titanium guided sleeves AS TX
- Titanium guided sleeves C
- Titanium guided sleeves MB
- Titanium guided sleeves NB
- Titanium guided sleeves S
- Titanium guided sleeves T
- Titanium guided sleeves X
- Titanium guided sleeves Z
- Titanium inner sleeves
- Titanium inner sleeves with depth stop
- Titanium outer sleeves**
- Titanium outer sleeves, open
- Titanium single sleeves
- Titanium sleeves for anchor pins

Hilfe    46    Position: 36    34    Schließen

Outer sleeve

Different lengths






Hersteller: stecco system-technik

Modell: **Universal inner sleeves**

Artikelnummer:  
Hülselänge:  
Durchmesser (inner):



Bohrtiefe bis Anschlag: **20.06**  
Hülse bis Knochen (Raum für Gingiva):

- Titanium guided sleeves AN
- Titanium guided sleeves AS TX
- Titanium guided sleeves C
- Titanium guided sleeves MB
- Titanium guided sleeves NB
- Titanium guided sleeves S
- Titanium guided sleeves T
- Titanium guided sleeves X
- Titanium guided sleeves Z
- Titanium inner sleeves**
- Titanium inner sleeves with depth stop
- Titanium outer sleeves
- Titanium outer sleeves, open
- Titanium single sleeves
- Titanium sleeves for anchor pins

Hilfe    Position: 36    Schließen


## Inner sleeves

universal  
funnel shaped



Hilfsobjekt: stecco system-technik

Hersteller: stecco system-technik  
Modell: Titanium inner sleeves  
Artikelnummer:  
Hülslenlänge:  
Durchmesser (innen):



Bohrtiefe bis Anschlag: 20.01  
Hülse bis Knochen (Raum für Gingiva):

- Titanium guided sleeves AN
- Titanium guided sleeves AS TX
- Titanium guided sleeves C
- Titanium guided sleeves MB
- Titanium guided sleeves NB
- Titanium guided sleeves S
- Titanium guided sleeves T
- Titanium guided sleeves X
- Titanium guided sleeves Z
- Titanium inner sleeves
- Titanium inner sleeves with depth stop**
- Titanium outer sleeves
- Titanium outer sleeves, open
- Titanium single sleeves
- Titanium sleeves for anchor pins

Hilfe    34    Position: 33    45    Schließen

## Inner sleeves

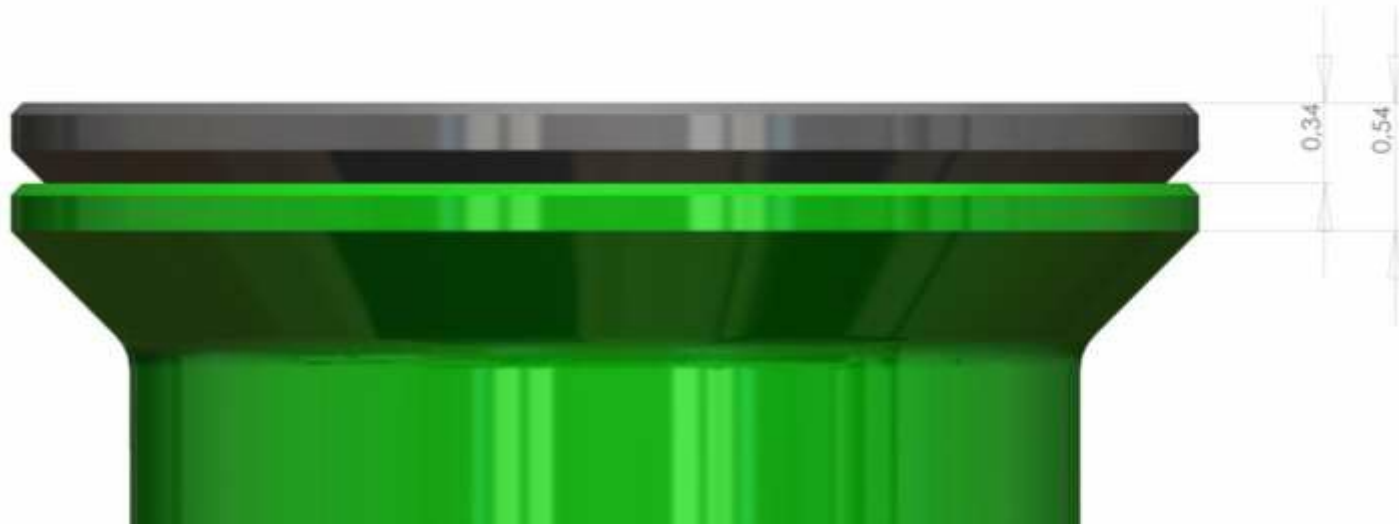
universal  
for depth stop



## Depth stop

Inner sleeve sits on outer sleeve

Varies with embedding height and stop design



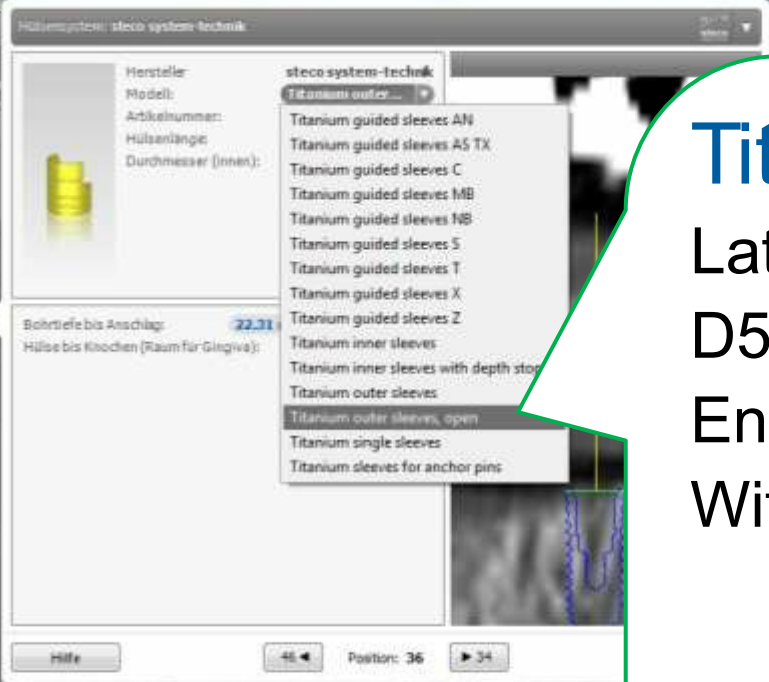
# Titanium outer sleeve

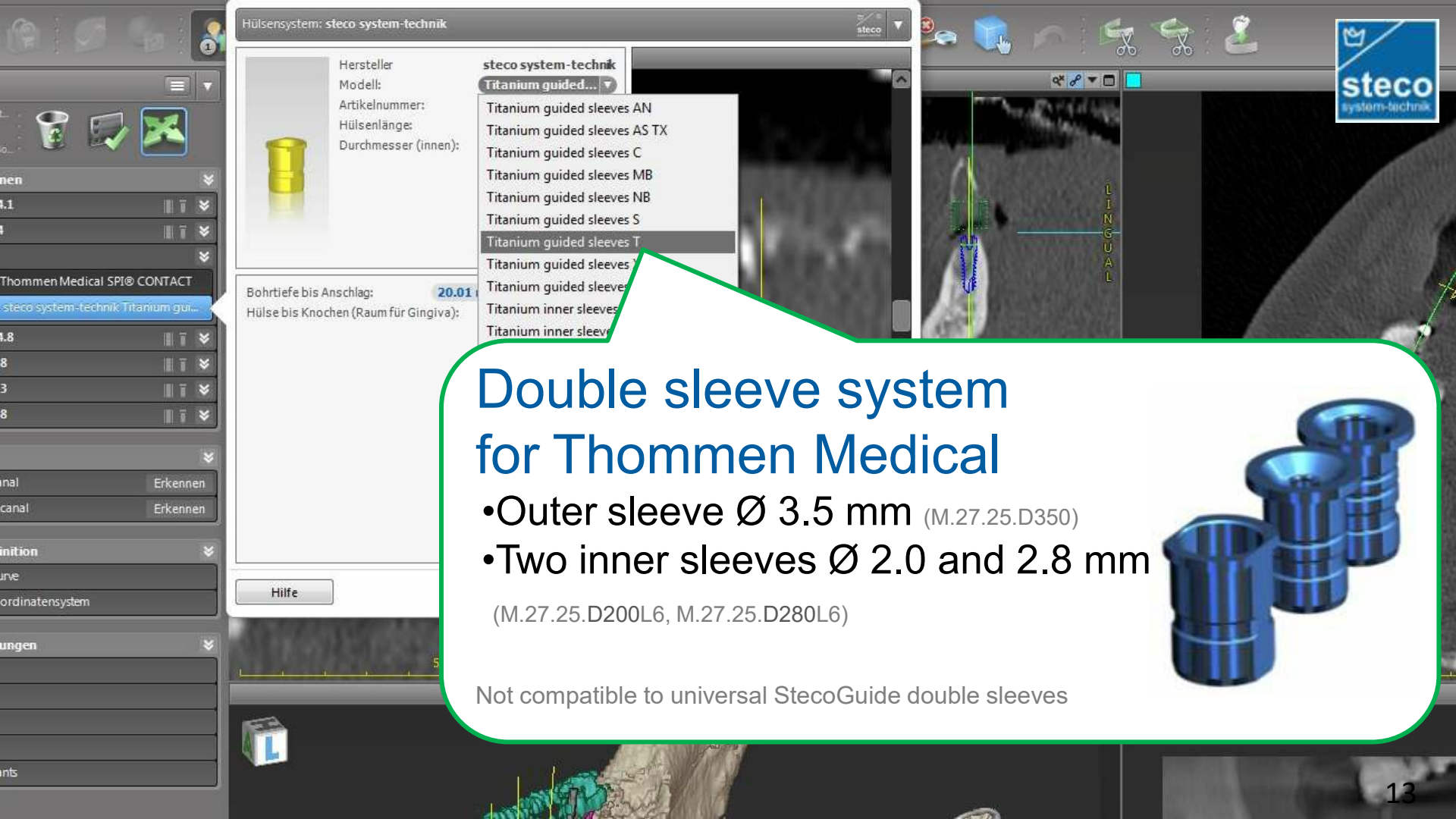
Laterally opened

D5 / d3,5 / L6

Enter sleeve from the side

With inner sleeve on drill





Hersteller:  
Modell:  
Artikelnummer:  
Hülenslänge:  
Durchmesser (innen):

- steco system-technik
- Titanium guided sleeves AN
  - Titanium guided sleeves AS TX
  - Titanium guided sleeves C
  - Titanium guided sleeves MB
  - Titanium guided sleeves NB
  - Titanium guided sleeves S
  - Titanium guided sleeves T
  - Titanium guided sleeves
  - Titanium guided sleeves
  - Titanium inner sleeves
  - Titanium inner sleeves

Bohrtiefe bis Anschlag: 20.01  
Hülse bis Knochen (Raum für Gingiva):

Hilfe

## Double sleeve system for Thommen Medical

- Outer sleeve Ø 3.5 mm (M.27.25.D350)
- Two inner sleeves Ø 2.0 and 2.8 mm (M.27.25.D200L6, M.27.25.D280L6)

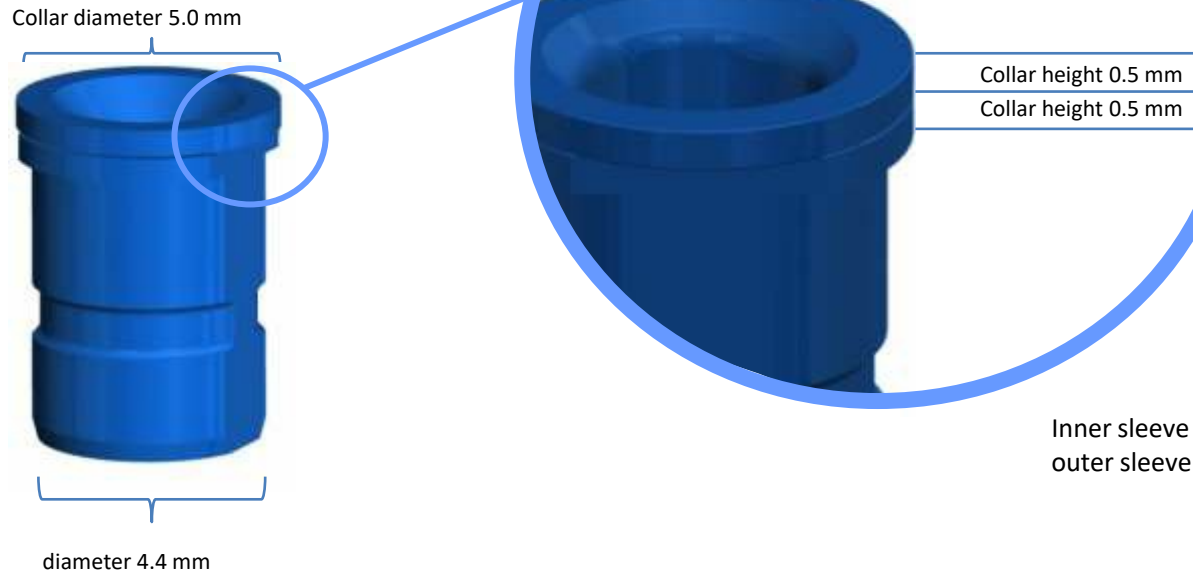


Not compatible to universal StecoGuide double sleeves



## Depth stop

*via laser marking on VECTOdrill*





## Guide sleeves

Alternative sleeves for fully guided surgery



## Guide sleeves

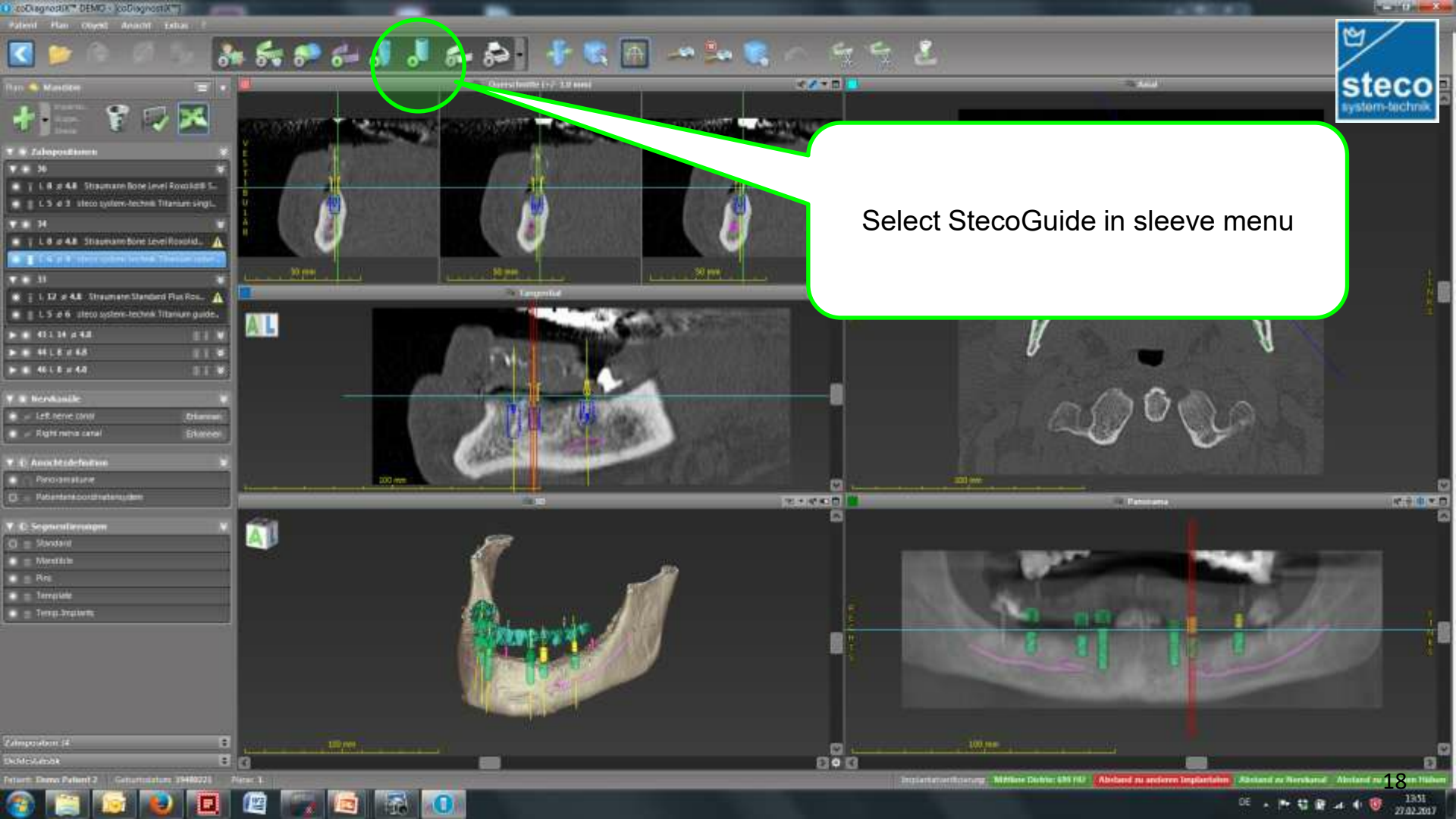
diameter and length like original supplier



Compatibility to systems like Neoss, implant direct ...

The brands and trademarks are owned by the respective manufacturers





Select StecoGuide in sleeve menu

Titanium guided sleeves AN

Titanium guided sleeves AS TX

Titanium guided sleeves C

Titanium guided sleeves MB

Titanium guided sleeves NB

Titanium guided sleeves S

Titanium guided sleeves T

Titanium guided sleeves X

Titanium guided sleeves Z

Ankylos

Astra TX

Camlog

no standard (Mats Bronten)

Nobel Biocare

Straumann

Thommen Medical

Xive

Zimmer

Titanium inner sleeves

Titanium inner sleeves with depth stop

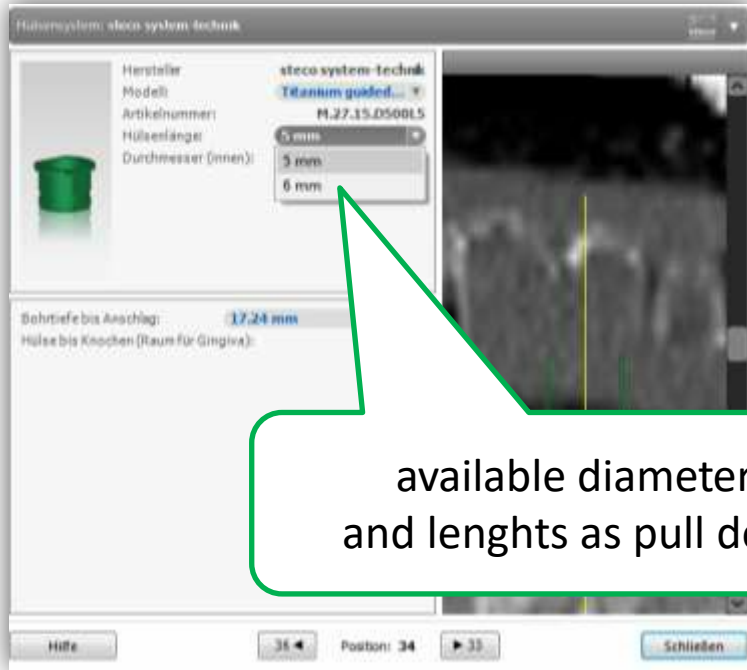
Titanium outer sleeves

Titanium outer sleeves, open

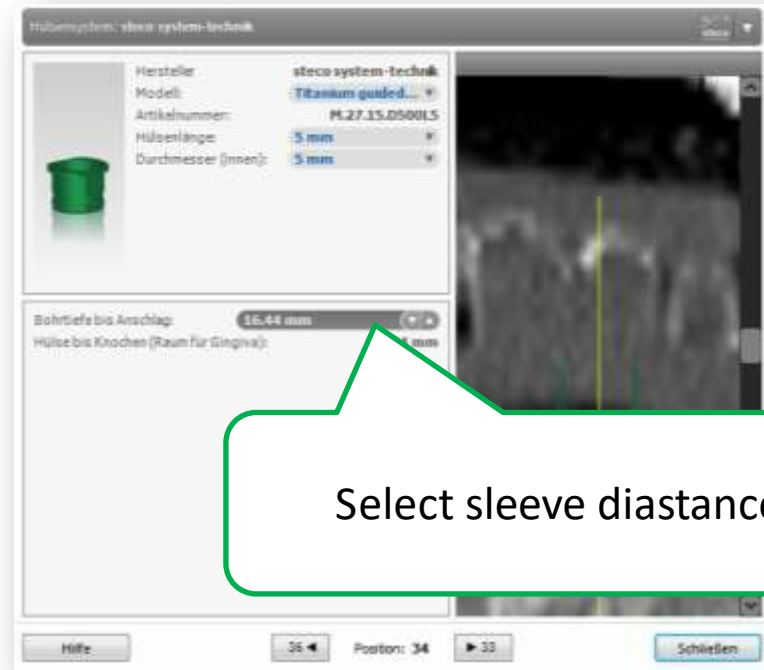
Titanium single sleeves

Titanium sleeves for anchor pins

Die abgebildeten Marken gehören den jeweiligen Herstellern!

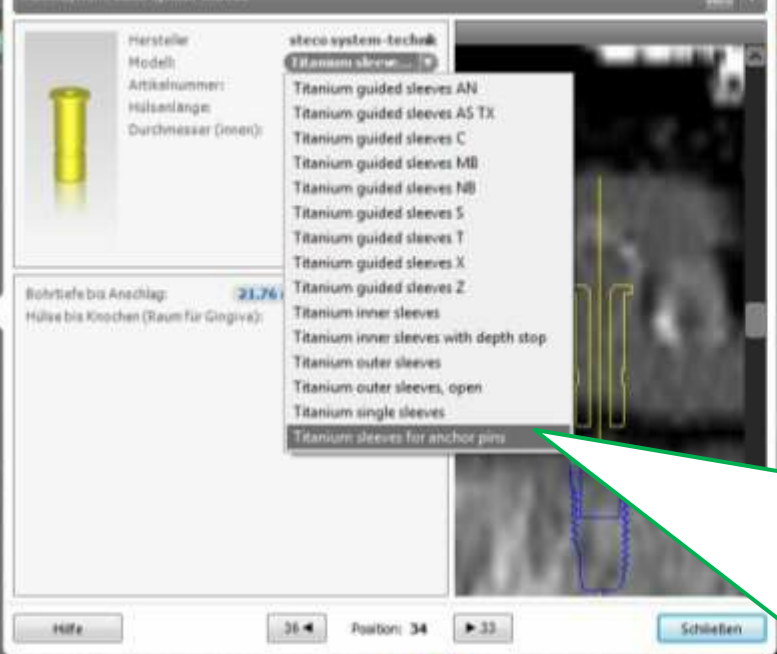


available diameters  
and lengths as pull down



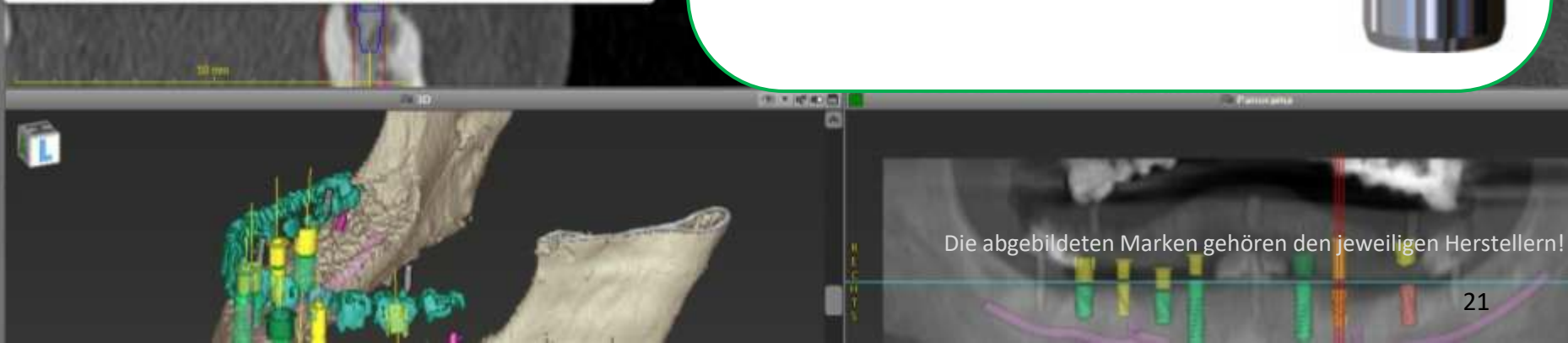
Select sleeve distance





# Sleeves for anchor pin

- M.27.20.D150L10  
for Nobel Guide pins



Die abgebildeten Marken gehören den jeweiligen Herstellern!



[info@steco.de](mailto:info@steco.de)



+49 (0)495 651 214



+49 (0)495 652 474



Find us on Facebook

# www.dentalsil.com